

Lifetex India designs, develops and manufactures medical devices like portable medical air compressors for home care, long-term care, hospital and emergency environments. Our vision is to build products that are of superior quality to ensure safe and reliable healthcare being delivered to every patient.

We collaborate with the manufacturers of medical ventilators and anesthesia machines to build air compressors specific to their requirements. Our passion to continuously improve the product that has low noise and vibration while delivering reliable, clean dry air will help the anesthetists, and critical care specialists to deliver their services with peace of mind.

### PRODUCT VARIANTS:

We offer two variants of medical air compressor as given below:

Life Air 100 series (LA 100) – Basic model with air cooled system

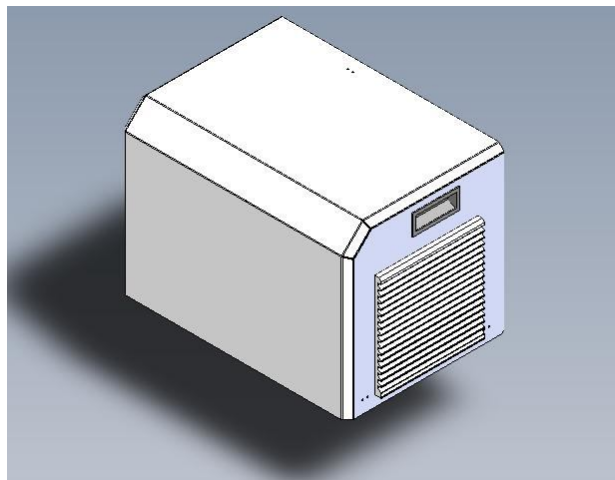
Life Air 200 series (LA 200) – Advanced model with peltier cooled system

### SALIENT FEATURES:

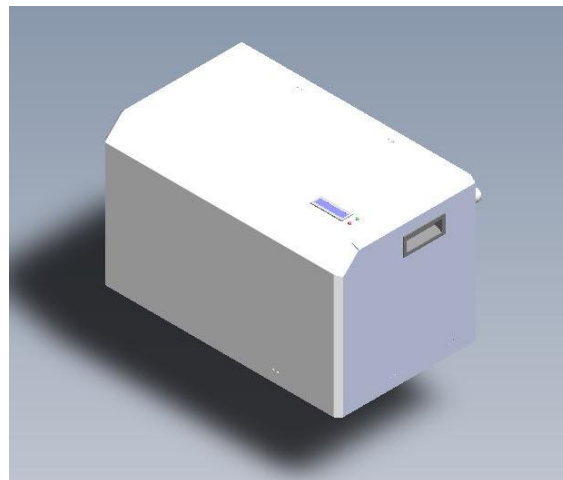
Some of the salient features of both the products are:

1. The unit runs on Thomas pump, which is highly reliable & rated for continuous operation.
2. Its compact size makes it convenient for use within the hospital.
3. The body is built with GI sheet to prevent rusting throughout its life.
4. The in-built pneumatic re-circulation system ensures clean air delivery.
5. The twin-solenoid water removal system ensures moisture-free air at the outlet.
6. Standby function is available as option to connect ventilator directly to wall supply.
7. Dual outlet is available as option to connect two infant ventilators or bubble CPAPs simultaneously.

### PRODUCT VIEW:



LA100 MEDICAL COMPRESSOR



LA200 MEDICAL COMPRESSOR



## Lifetex India

KA 503-B, K-Block (4<sup>th</sup> floor), PSG-STEP  
 PSG College of Technology, Peelamedu, Coimbatore 641004.  
 Phone +91-422-4349894 email: info@lifetex.in www.lifetex.in

### SPECIFICATION\*:

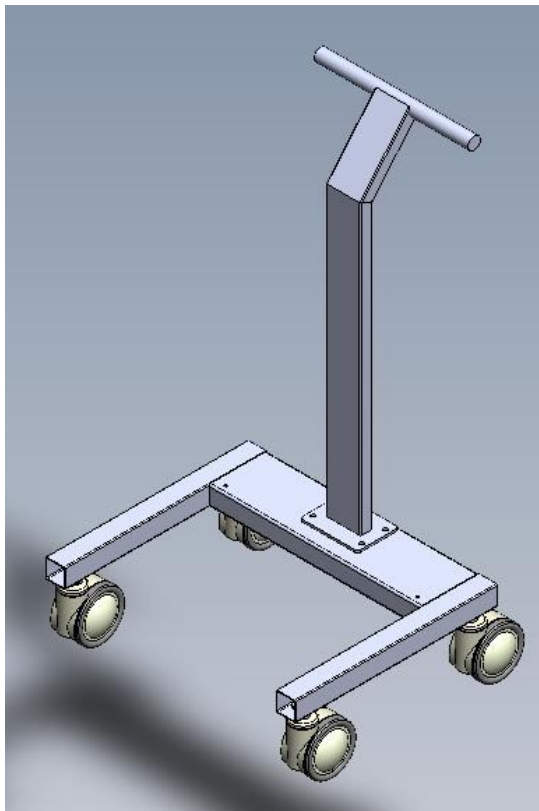
GENERAL	LA100	LA200
Intended use	Supply dry filtered air for respiratory ventilator or anesthesia machine	
Area	Intensive care, recovery room	
Type of operation	Long-term use, applicable as main or back-up supply	
Noise level	≤ 50 dB(A) at distance of 1m	
Over pressure relief	6.0 bar / 87 psi	
Electrical protection	Mains power fuses with ON/OFF switch	
Mounting (optional)	Trolley with castor wheels	
Service mode	NA	Available
Gross Weight	< 33 kg	< 35 kg
Dimensions	W 45 cm, D 31 cm, H 32 cm	W 54 cm, D 31 cm, H 32 cm
<b>POWER SUPPLY</b>		
Power supply	220 to 240 V AC, 50 Hz, single phase	
Supply range	198 to 264 V AC	
Power consumption	< 550 W at nominal voltage	
Power inlet cable	230 V / 50 Hz, 15 A, single phase, 3 mtrs	
<b>COMPRESSOR CAPACITY</b>		
Outlet flow (continuous)	40 L/min (expanded to ambient air) at 3.5 bar / 50 psi	
Outlet flow (peak)	200 L/min (with pressure drop of 0.5 bar / 7 psi)	
Inlet pressure (optional)	2.5 to 6.0 bar / 36 to 87 psi	
Outlet pressure	3.0 to 4.0 bar / 44 to 58 psi	
Built-in air reservoir	1.25 L	
Particulate filtration	5 micron	
Dew point suppression	NA	> 5 °C / 9 °F below ambient temperature at 3.5 bar / 50 psi
<b>ALARMS</b>		
High temperature alarm	NA	ACOUSTIC 85 dB(A) max. at distance of 1 m OPTICAL Alarm message in LCD with blinking Red LED
Low pressure alarm	NA	ACOUSTIC 85 dB(A) max. at distance of 1 m OPTICAL Alarm message in LCD with blinking Red LED
<b>MONITORING</b>		
Outlet pressure	Pressure gauge (0 to 10 bar)	0.0 to 9.9 bar / 0 to 99 psi
Operating time	Hourmeter (0 to 99999 Hours)	0 to 99999 Hours
Display	NA	2 line matrix display
Ambient temperature	NA	0 to 99 °C / 0 to 999 °F
Cooler temperature	NA	0 to 99 °C / 0 to 999 °F
Pump temperature	NA	0 to 99 °C / 0 to 999 °F
AC input	NA	180 to 300 VAC
Cooler status	NA	ON or OFF
Water drain status	NA	ON or OFF
Power ON indicator	NA	Green LED
Alarm indicator	NA	Red LED

ENVIRONMENTAL CONDITIONS – OPERATIONS	
Ambient temperature	+10 to +40°C (50 to 104°F)
Ambient relative humidity	15 to 95%
Atmospheric pressure	660 to 1200 hPa (495 to 900 mm Hg)
ENVIRONMENTAL CONDITIONS – TRANSPORTATION & STORAGE	
Ambient temperature	-40 to +70°C (-40 to 158°F)
Ambient relative humidity	10 to 95%
Atmospheric pressure	500 to 1200 hPa (375 to 900 mm Hg)

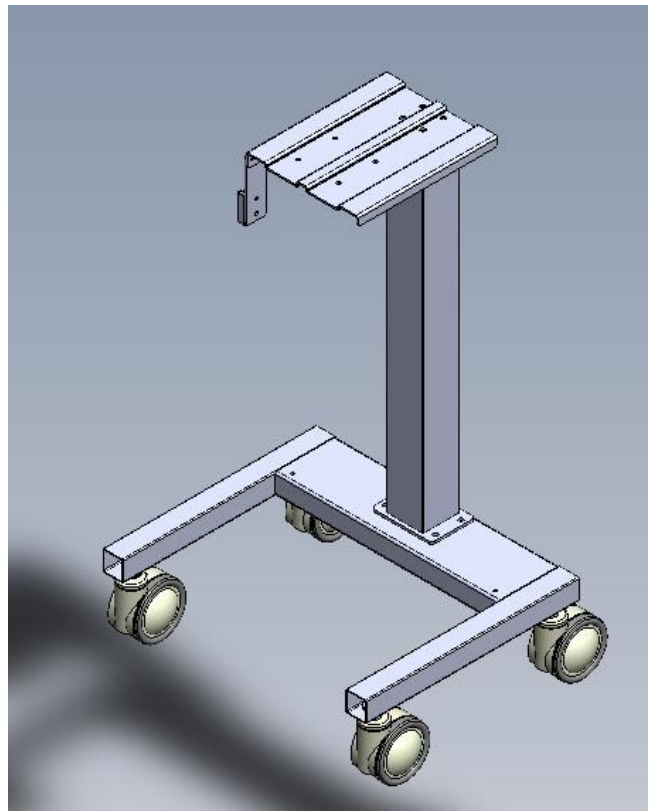
*\* In view of continuous improvement, the specification is subject to change without notice.*

### OPTIONAL ACCESSORIES:

1. Trolley with wheels for portability / ventilator mount
2. Standby function with wall supply inlet
3. Dual outlet (40 L/min total flow @ 50 psi)



TROLLEY WITH HANDLE



TROLLEY WITH VENTILATOR MOUNT